

NEWNHAM COLLEGE LIBRARY

Accessibility Guide

Please ask a member of Library staff if you have any questions or need extra assistance.

You can also get in touch with the University's Disability Resource Centre or Newnham's Health Centre



LIBRARY ACCESS

There is step-free access into the library, with one set of card-access sliding doors into the library lobby (to the self-issue machine and book return area) and another set of card-access sliding doors into the main library. A lift links all three floors of the Horner Markwick building. However, please note that the lift is not accessible due to building works in 2023; please ask a member of staff to fetch books.

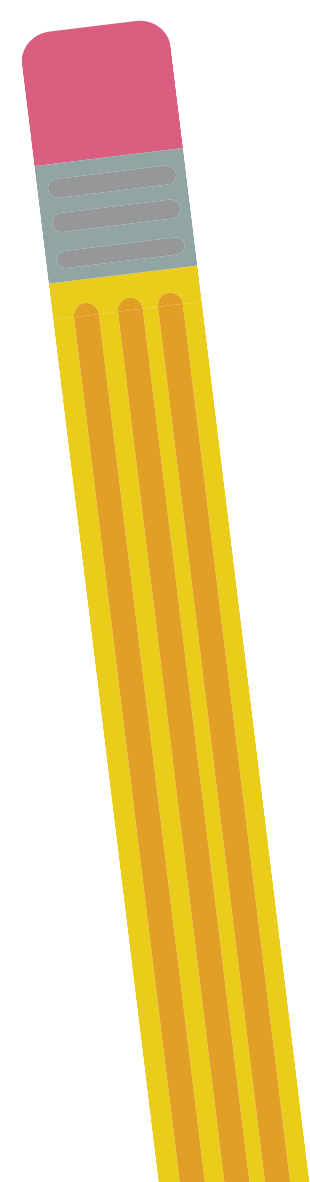
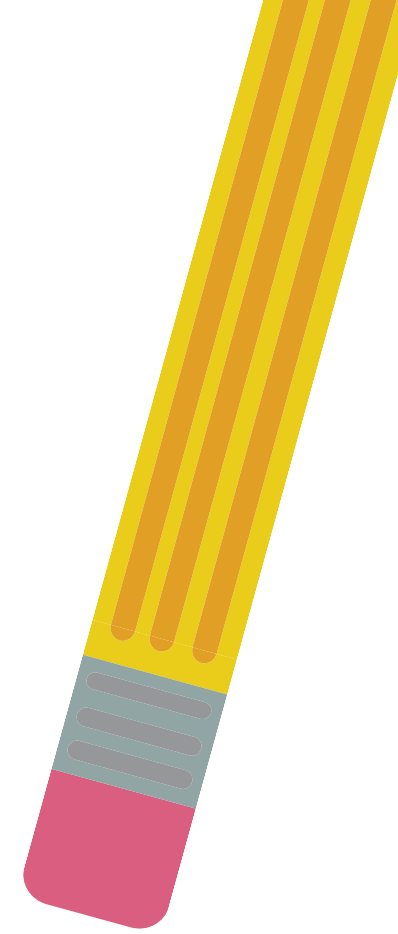
LIBRARY SPACES

Horner Markwick Library

- Unisex toilet on lower ground floor.
- Accessible toilet down the corridor in both directions, on the way to the buttery or in the Iris café.
- Height-adjustable chairs in the Horner Markwick Library and fully adjustable chairs in the IT suite.
- Level access to all floors via lift (however, please note that the lift is not accessible due to building works in 2023).
- The first floor and the basement are not currently wheelchair accessible; please ask a member of staff to fetch books.
- Some higher shelves may require the use of a kick stool. Please ask staff if you would like us to fetch any books.
- Two ground floor desks are reserved for priority users as an accessible study space.

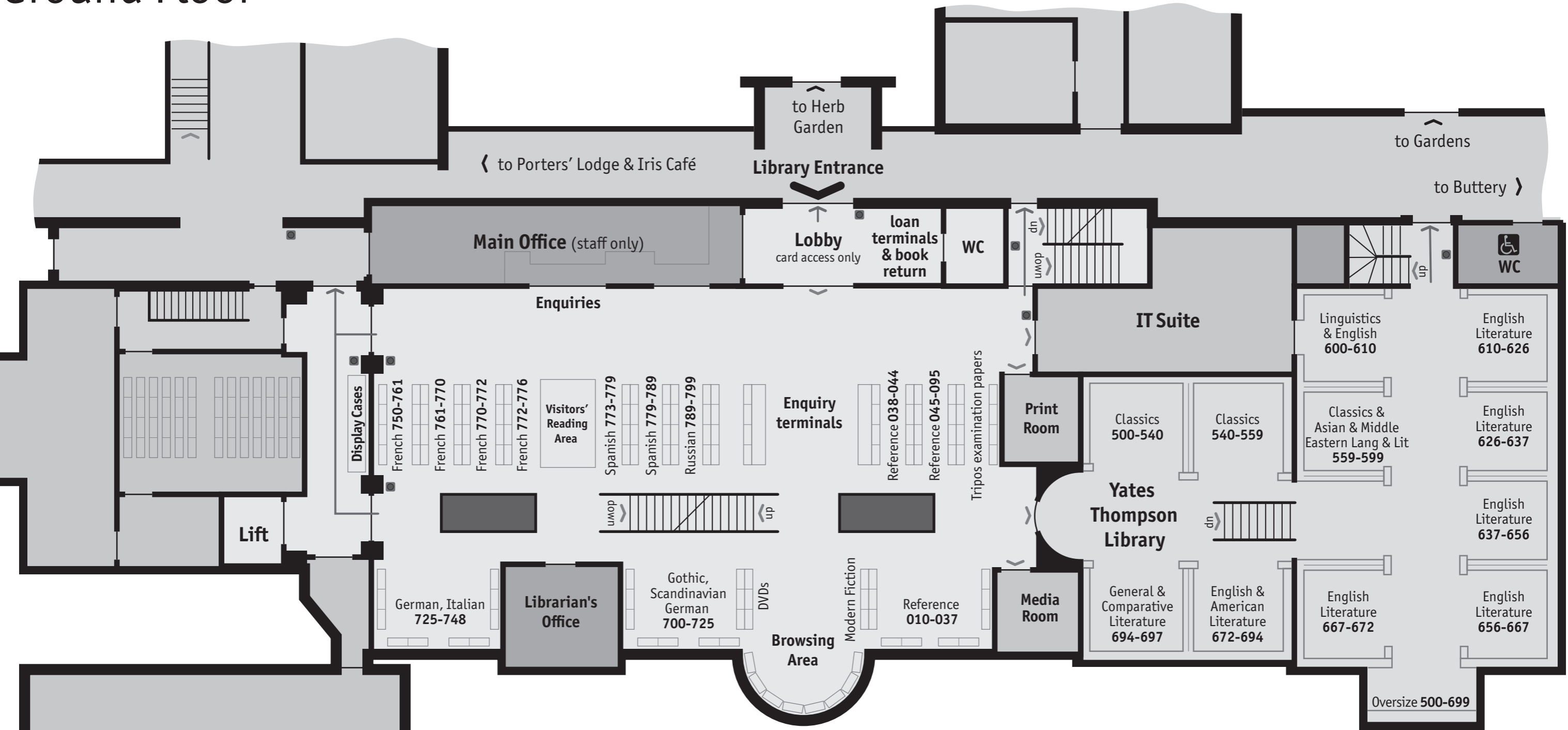
Yates Thompson Library

- Access via Horner Markwick main entrance.
- Accessible toilet down the corridor in both directions, on the way to the buttery or in the Iris café.
- First floor not wheelchair accessible; please ask a member of staff to fetch books.
- Some higher shelves may require the use of a kick stool. Please ask staff if you would like us to fetch any books.
- Two ground floor desks are reserved for priority users as an accessible study space.



Newnham College Library

Ground Floor



- Fire alarm call point
- Fire exit

GROUND FLOOR:
 Asian & Middle Eastern Lang & Lit (590s)*
 Classics (500s)*
 Comparative Literature (600s)*
 Current Periodicals & Newspapers
 English Language & Literature (600s)*
 Linguistics (600s)*
 Modern Languages (700s)
 Reference (000s)
 Tripos examination papers

* = Yates Thompson Library

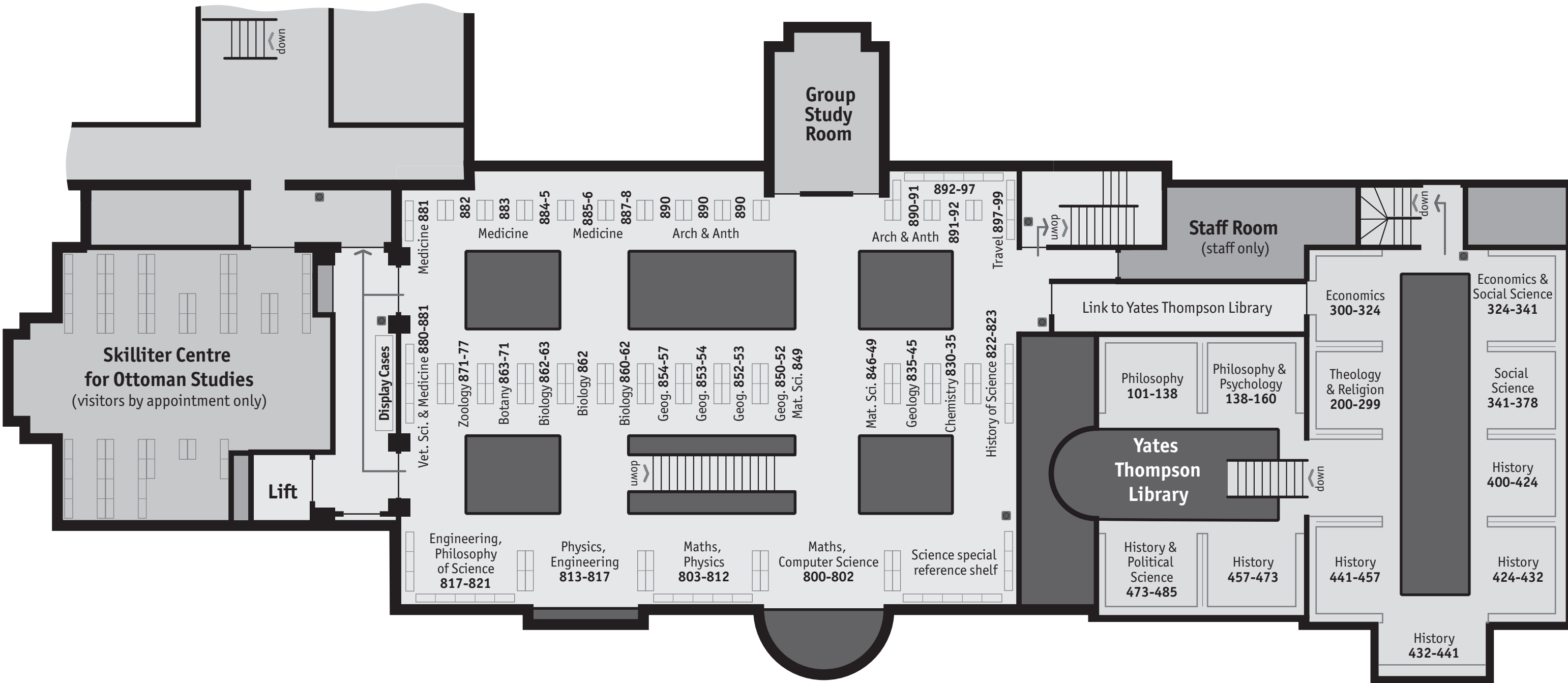
FIRST FLOOR:
 Archaeology & Anthropology (890s)
 Economics & Social Science (300s)*
 Geography (850s)
 History (400s)*
 Philosophy & Psychology (100s)*
 Political Science (490s)*
 Science (800s)
 Science special reference shelf
 Theology (200s)*

* = Yates Thompson Library

BASEMENT:
 Art, Architecture & Music (900s)
 Bound periodicals (all subjects)
 Law (493-498)

Newnham College Library

First Floor



- Fire alarm call point
- Fire exit

GROUND FLOOR:

- Asian & Middle Eastern Studies (590s)*
- Classics (500s)*
- Comparative Literature (600s)*
- Current Periodicals & Newspapers
- English Language & Literature (600s)*
- Linguistics (600s)*
- Modern Languages (700s)
- Reference (000s)
- Tripas examination papers

* = Yates Thompson Library

FIRST FLOOR:

- Archaeology & Anthropology (890s)
- Economics & Social Science (300s)*
- Geography (850s)
- History (400s)*
- Philosophy & Psychology (100s)*
- Political Science (480s)*
- Science (800s)
- Science special reference shelf
- Theology & Religion (200s)*

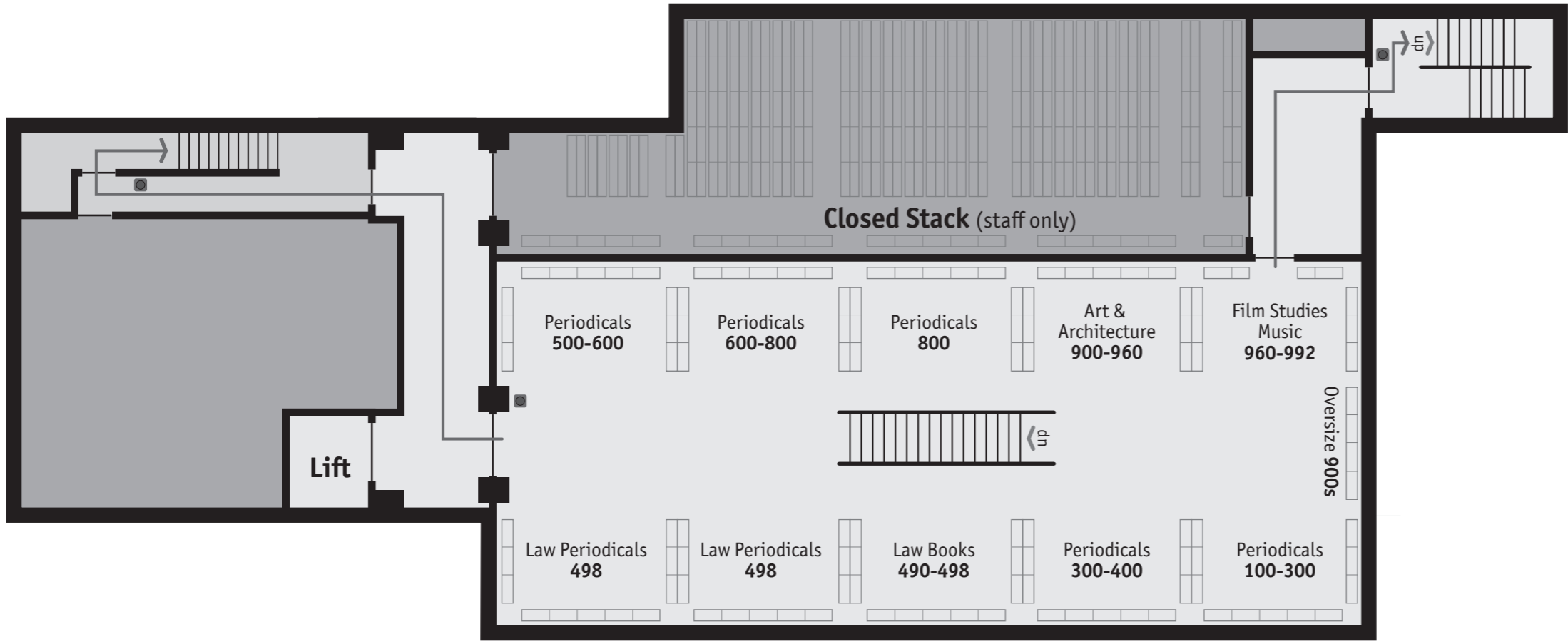
* = Yates Thompson Library

BASEMENT:

- Art, Architecture & Music (900s)
- Bound periodicals (all subjects)
- Law (493-498)

Newnham College Library

Basement



● Fire alarm call point
 → Fire exit

GROUND FLOOR:
 Asian & Middle Eastern Studies (590s)*
 Classics (500s)*
 Comparative Literature (600s)*
 Current Periodicals & Newspapers
 English Language & Literature (600s)*
 Linguistics (600s)*
 Modern Languages (700s)
 Reference (000s)
 Tripos examination papers
 * = Yates Thompson Library

FIRST FLOOR:
 Archaeology & Anthropology (890s)
 Economics & Social Science (300s)*
 Geography (850s)
 History (400s)*
 Philosophy & Psychology (100s)*
 Political Science (490s)*
 Science (800s)
 Science special reference shelf
 Theology (200s)*
 * = Yates Thompson Library

BASEMENT:
 Art, Architecture,
 Film Studies & Music (900s)
 Bound periodicals (all subjects)
 Law (490s)

ADDITIONAL SERVICES

- Extended borrowing rights: let us know if you need longer loan periods or a higher book limit and we'll make the necessary adjustments. Automated book renewals mean that unless books have been requested for use by another reader, your loans will renew automatically.
- 1:1 inductions: all students will be sent links to induction videos with subtitles on fire evacuation, borrowing, and navigating the Library. If you would like to book a 1:1 session, just let us know and we can arrange that for you.
- Proxy borrowing: if you have been assigned a helper from the Disability Resource Centre (DRC), please let us know so that we can arrange their induction and set up an account for them to borrow books on your behalf.
- Please let us know if there are any library resources (posters, leaflets, etc.) that you would prefer in an alternative format.

Please do not hesitate to contact the Librarian if there is anything else we can do to help you to work in the Library. Email library@newn.cam.ac.uk or telephone 01223 335740.

CLICK & COLLECT

If your physical or mental health makes it difficult to use part or all of the Library, we can fetch books for you. Our book fetching service is available for members of Newnham College. Just email library@newn.cam.ac.uk with details of up to 5 books you want to borrow and their classmarks. Allow at least one working day for us to process your request and, subject to availability, we'll find the books, issue them to your account, and make an appointment for you to collect them.

ASSISTIVE EQUIPMENT

- Book rests
- Adjustable desk lamps
- Magnifying sheets
- Blue paper for printing

Please let us know if you have any other recommendations of assistive equipment that would help you or other students and we'll do our best to provide it.

LIBRARIES ACROSS CAMBRIDGE

The UL provides information for disabled readers, and offers a range of assistive technologies: <https://www.lib.cam.ac.uk/accessibility>

ASSISTIVE SOFTWARE

SensusAccess

<https://www.disability.admin.cam.ac.uk/create-alternative-format-document-sensus-access>

This service allows students and staff at Cambridge to create alternative document formats. It allows anyone with a University of Cambridge email address to upload documents in a variety of formats (e.g. pdf, png, jpeg) and have those documents quickly converted to alternative and accessible formats, in a range of languages. Please ask a member of library staff for more information.

RNIB Bookshare

Students with a qualifying print disability may be eligible for access to the RNIB Bookshare service. Please contact the Accessibility Service for further information if you require ebooks, audio books, or books in different formats:

<https://www.lib.cam.ac.uk/using-library/disabled-library-users/libraries-accessibility-service>

SHELF HELP COLLECTION

You'll find a collection of 'shelf help' books – anything from how to fix your bike, to study skills, to social anxiety, to guides to relaxation and stress reduction – on the shelves to the left of the Horner Markwick as you enter the library. They all begin with the classmark 070.

You can borrow these books as normal, either from a member of staff or through the self-issue terminals in the Library lobby. Some books do not need to be borrowed at all if you would rather not add them to your library account. They will have a sticker on the front cover with the following text:

You do not need to charge this book to your account. If you prefer, you can just borrow the book without recording the loan and return it through the anonymous book drops when you have finished.

Please let us know if you have any suggestions for other welfare books. If you would like your suggestion to be anonymous, please just put 'welfare request' in the *Name and *Email part of the Newnham College Library online recommendation form.

USEFUL LINKS

Disability Resource Centre:

<https://www.disability.admin.cam.ac.uk/>

University Library book, journal, and database recommendations:

<http://www.lib.cam.ac.uk/collections/book-recommend>

University Library disabled library users:

<https://www.lib.cam.ac.uk/accessibility>

Newnham new books recommendations:

<https://www.newn.cam.ac.uk/about/library/finding-resources-study/book-recommendation-form-2/>

Newnham health:

<https://www.newn.cam.ac.uk/student-life/support/health/>

Cambridge Libraries Accessibility LibGuide:

<https://libguides.cam.ac.uk/accessibility>

USEFUL CONTACTS

Eve Lacey, Librarian:

librarian@newn.cam.ac.uk

Newnham nurse:

nurse@newn.cam.ac.uk

Newnham counsellor:

counsellor@newn.cam.ac.uk

Tutorial office:

tutorial.office@newn.cam.ac.uk

Senior Tutor (Dr Sheila Watts):

senior.tutor@newn.cam.ac.uk

Graduate Tutor (Dr Kate Fleet):

graduate.tutor@newn.cam.ac.uk

eresources team:

<https://www.libraries.cam.ac.uk/eresources/contact-us>

Libraries Accessibility Service:

disability@lib.cam.ac.uk

